

# compile quick ship





## Simply Quick

Compile's Quick Ship program offers a concise, carefully curated collection of pieces that deliver maximum functionality and value, are easy to specify and install and ship within 10 manufacturing days.

Components are available in our bestselling textiles and finishes and are the perfect solution for any environment, saving you time and effort and allowing faster project completion, from development to installation.



## Simply Clean

A simply clean aesthetic. Quick Ship panels are available in a clean monolithic appearance and utilize aluminum raceway covers that are available with or without knockouts. Optional PET Felt panels provide a softer visual aesthetic while easily integrated height adjustable tables add movement throughout the day.





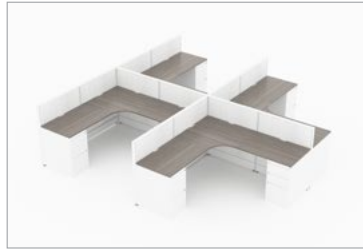
## Simply Simple

Simply create the space you want. Compile panels and universal corner posts ship with pre-assembled “Quick Connect”, which makes it one of the easiest system products to install and reconfigure. Workstations accommodate a range of foot prints and are a flexible solution for your interior.

Compile Quick Ship solutions are durable, flexible and easily reconfigure as your needs change. Dial up or down privacy through a range of panel heights and divider options.



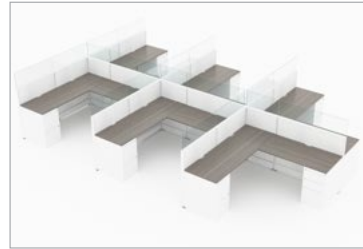
Ideal for workplace, education and healthcare environments, Compile can create a range of planning applications and accommodates stringent cleaning protocols.



**CMQS 508** list price \$17,022  
station size 6'x6' total height 42"  
[download - 10.2 MB](#)



**CMQS 508-W** list price \$20,694  
station size 6'x6' total height 54"  
[download - 9.9 MB](#)



**CMQS 510** list price \$29,229  
station size 6'x6' total height 54"  
[download - 9.8 MB](#)



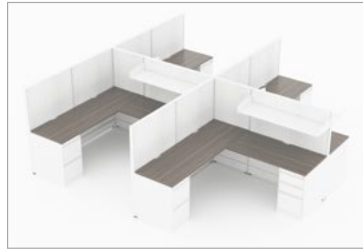
**CMQS 567-W** list price \$15,225  
station size 2'x4' total height 54"  
[download - 4.4 MB](#)



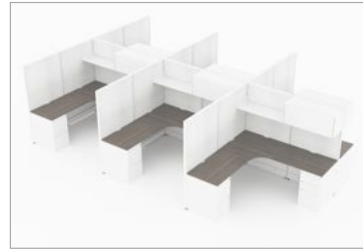
**CMQS 544** list price \$21,226  
station size 6'x8' total height 54"  
[download - 5.18 MB](#)



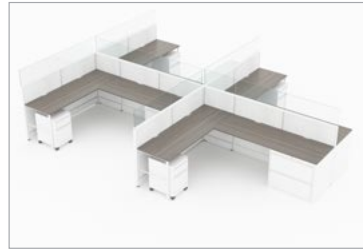
**CMQS 545** list price \$24,208  
station size 8'x6' total height 54"  
[download - 10.8 MB](#)



**CMQS 511** list price \$17,254  
station size 6'x6' total height 54"  
[download - 10 MB](#)



**CMQS 512** list price \$31,354  
station size 6'x6' total height 66"  
[download - 10.1 MB](#)



**CMQS 517** list price \$25,750  
station size 6'x8' total height 54"  
[download - 10.2 MB](#)



**CMQS 546** list price \$27,844  
station size 8'x8' total height 54"  
[download - 5.7 MB](#)



**CMQS 547** list price \$24,800  
station size 6'x6' total height 66"  
[download - 5 MB](#)



**CMQS 548** list price \$27,114  
station size 6'x8' total height 66"  
[download - 10.8 MB](#)



**CMQS 538** list price \$18,144  
station size 8'x6' total height 42"  
[download - 5.12 MB](#)



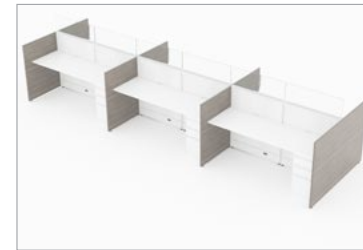
**CMQS 539** list price \$30,412  
station size 8'x6' total height 66"  
[download - 6.30 MB](#)



**CMQS 540** list price \$11,685  
station size 2'x3.5' total height 42"  
[download - 12.6 MB](#)



**CMQS 549** list price \$29,918  
station size 8'x8' total height 66"  
[download - 10.4 MB](#)



**CMQS 550** list price \$17,836  
station size 2'x6' total height 54"  
[download - 12.9 MB](#)



**CMQS 551** list price \$23,290  
station size 2'x6' total height 54"  
[download - 9.6 MB](#)



**CMQS 541** list price \$18,812  
station size 6'x6' total height 42"  
[download - 8.87 MB](#)



**CMQS 542** list price \$17,875  
station size 6'x6' total height 42"  
[download - 9.37 MB](#)



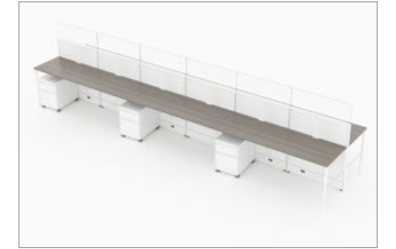
**CMQS 543** list price \$21,282  
station size 6'x6' total height 54"  
[download - 4.17 MB](#)



**CMQS 552** list price \$28,843  
station size 6'x6' total height 54"  
[download - 10.1 MB](#)



**CMQS 553** list price \$34,751  
station size 6'x6' total height 54"  
[download - 11 MB](#)



**CMQS 555** list price \$16,838  
station size 2'x6' total height 54"  
[download - 3.8 MB](#)



**CMQS 567** list price \$9,212  
station size 2'x4' total height 54"  
[download - 4.4 MB](#)



**CMQS 556** list price \$20,196  
station size 6'x6' total height 54"  
[download - 4.2 MB](#)

Due to pricing fluctuations, please verify all pricing with our Specification Team for accuracy.

Due to pricing fluctuations, please verify all pricing with our Specification Team for accuracy.

# textiles + finishes

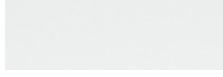
## Laminates



Absolute Acajou (ACJ)



Custom Grey (CGY)



Designer White (DWT)



White Chocolate (WHC)

## PVC Edge Trim



Absolute Acajou (AAE)



Designer White (DWE)

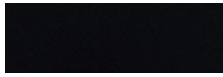


Silver (SIL)



White Chocolate (CBE)

## Worksurface Scoops



Black (BLK)



Silver (SIL)



Designer White (DWT)

## Paint + Frame Colors



Designer White (DWT)



Fog (FOG)

## PET Felt



Graphite (GPH)



Mist (MTS)



Pewter (PWT)

## Anchorage



Birch (AN40)



Green Apple (AN41)



Lapis (AN42)



Straw (AN43)



Wolf (AN44)



Goose (AN45)



Angora (AN46)



Cumin (AN47)



Asteroid (AN48)



Geranium (AN49)



Thistle (AN50)



Graphite (AN51)



Slate (AN52)



Quarry Blue (AN53)



Onyx (AN54)



Pumpkin (AN55)



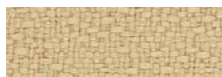
Red Delicious (AN56)



Sunshine (AN57)



Waterfall (AN59)



Vanilla (AN61)



Cobalt (AN62)



Cloud (AN64)

## Tek



TX60 (Finesse)



Grain (TX61)



Essence (TX62)



Warp (TX64)



Mesh (TX67)



Form (TX69)



Spice (TX71)



Glacier (TX72)



Spring (TX73)



Harmony (TX74)



Smoke (TX75)



Pebble (TX76)